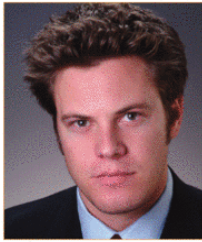


SoCal's Best and Brightest Rising Stars of CRE



**DAVID STONE (29)****Associate**
Allen Matkins Leck Gamble
Mallory & Natsis LLP

In the second half of 2008, Stone represented Hines in connection with a 350,000-square-foot office lease with Union Bank, reportedly the largest lease transaction in Downtown Los Angeles since 1989. He also represented

Taco Bell in connection with a 180,000-square-foot office lease of its corporate headquarters in Irvine, and advised Legg Mason in connection with a complex restructuring of a portfolio of eight mortgage loans totaling approximately \$120 million

the \$143-million sale of the William Morris Agency headquarters in Beverly Hills. She is a member of C&W's capital markets group, dealing with the disposition of investment properties throughout the western region. Additionally, she is responsible for tracking and analysis of capital and property markets, providing the team's clients with superior research and data.

**MICHAEL VERNICK (27)****Vice President**
Voit Commercial Brokerage LP

In 2008, Vernick, working out of Voit's Anaheim metro office, helped to direct the sale of 11 buildings at a 25-building business park before the construction of the project was even completed. A graduate of the inaugural class of the Naio Young Professionals Program, Vernick

has been involved in 1.4 million square feet of industrial and sales deals with an aggregate value in excess of \$111 million.

**LINDSAY TRAGLER (24)****Associate**
Cushman & Wakefield Inc.

Tragler is part of a team that executed transactions totaling \$310 million during 2008, including the \$100-million recapitalization of Pegasus Apartments in Downtown Los Angeles—believed to be the largest multifamily transaction in Southern California during 2008—and

Did You Know?

In this year's listing of young executives under age 30, eight are women. The previous time *Real Estate Southern California* compiled a 30 Under 30 list, nine were women.

April 29, 2009
Marriott Marquis, New York

7th Annual

RealShare **NET LEASE**

Hosted by Real Estate Forum and GlobeSt.com

Experts to Weigh in on How to Survive (and Prosper) in 2009

								
Richard Ader U.S. Realty Advisors	Dr. Sam Chandan Real Estate Economics, LLC	Howard Davidowitz Davidowitz & Associates	Gordon DuGan W.P. Carey & Co.	Kyle Gore RBS Global Banking & Markets	Glen Kunofsky Marcus & Millichap	Bruce MacDonald Net Lease Capital Advisors	Paul McDowell CapLease, Inc.	Nicholas Schorsch American Realty Capital

<p>SPONSOR:</p> <ul style="list-style-type: none"> • Angelo, Gordon & Co. • Marcus & Millichap • U.S. Realty Advisors, LLC 	<p>HOSPITALITY SPONSORS:</p> <ul style="list-style-type: none"> • Calkain Companies • Class Green Capital Partners • iStar Financial • Stan Johnson Company • W.P. Carey & Co. LLC 	<p>CONTACT:</p> <p>Sponsorship Information Terry Bisogno • 212-457-9657 terry.bisogno@incisivemedia.com</p> <p>General Information Brian Klebash • 212-457-9682 brian.klebash@incisivemedia.com</p>
--	--	--

Register Today: www.RealShareConferences.com/NetLease

An incisivemedia event